

# Warwickshire Geological Conservation Group

<b>Warwickshire Local Geological Site</b>	
Site No: 47	Royal Oak Gravel Pit & Cutting
Geological Formations	Wolston (Middle Pleistocene)
Criteria Form	p 2
Description	p 3
Photographs	p 4
Location Map	p 5

Local Geological Sites (LGS), designated by locally developed criteria, are currently the most important places for geology and geomorphology outside statutorily protected land such as Sites of Special Scientific Interest (SSSI). The designation of LGS is one way of recognising and protecting important Earth science and landscape features for future generations to enjoy.

WGCG is responsible for the identification of LGS in Warwickshire and the West Midlands.

Please note that designation of a site as a LGS does not confer a legal right of access. Unless the site is on a designated public right-of-way, the landowner's permission is required before visiting.

## Warwickshire Local Geological Site - Criteria Form

<b>Site name:</b> Royal Oak Gravel Pit & Cutting	<b>Also known as:</b>
--	-----------------------

<b>District:</b> Rugby	<b>County:</b> Warwickshire
------------------------	-----------------------------

<b>Grid reference:</b> SP 5468 7342	<b>LoGS Number:</b> 47	<b>ESCC Class:</b>	ED/ER
-------------------------------------	------------------------	--------------------	-------

**Brief Description:** A disused sand/gravel pit with exposures (v. overgrown & slumped 2009) of sands and gravels with fractured flints and smooth sandstone pebbles, together with the mainline railway cutting to the east. Attributed to the Hillmorton Member of the Middle Pleistocene Wolston Formation.

**This site qualifies as a Local Geological Site for the following criteria:**

**A Good Example of** the Hillmorton Member of the Middle Pleistocene Wolston Formation.

### Educational Fieldwork

1. Educational Potential	✓	2. Physical access	✓	3. Safety	✓
--------------------------	---	--------------------	---	-----------	---

### Scientific Study

1. Diversity of interest		2. Rarity of interest	✓	3. Size of feature	✓
4. Typicalness of feature	✓	5. Geological/physiographic linkage to:			

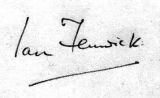
### Historical Value

1. Celebrity link		2. Pioneering research		3. Historical link	
-------------------	--	------------------------	--	--------------------	--

### Aesthetic Value In The Landscape

1. Local importance in the landscape		2. Promotion of Earth science			
--------------------------------------	--	-------------------------------	--	--	--

### Signed



I M Fenwick, Chairman,  
Warwickshire Geological Conservation Group

**Date first selected** 21st Nov. 2001

**Reviewed by LoGS panel** Oct. 2009

**Further survey required**

**LoGS Confirmed**

✓

### Endorsed by

**Warwickshire Museum**

**Natural England**

J Radley, Keeper of Geology

J A Irving, Conservation Adviser

**In the event of any development or planning consultation relating to this site or its surrounds please inform:**

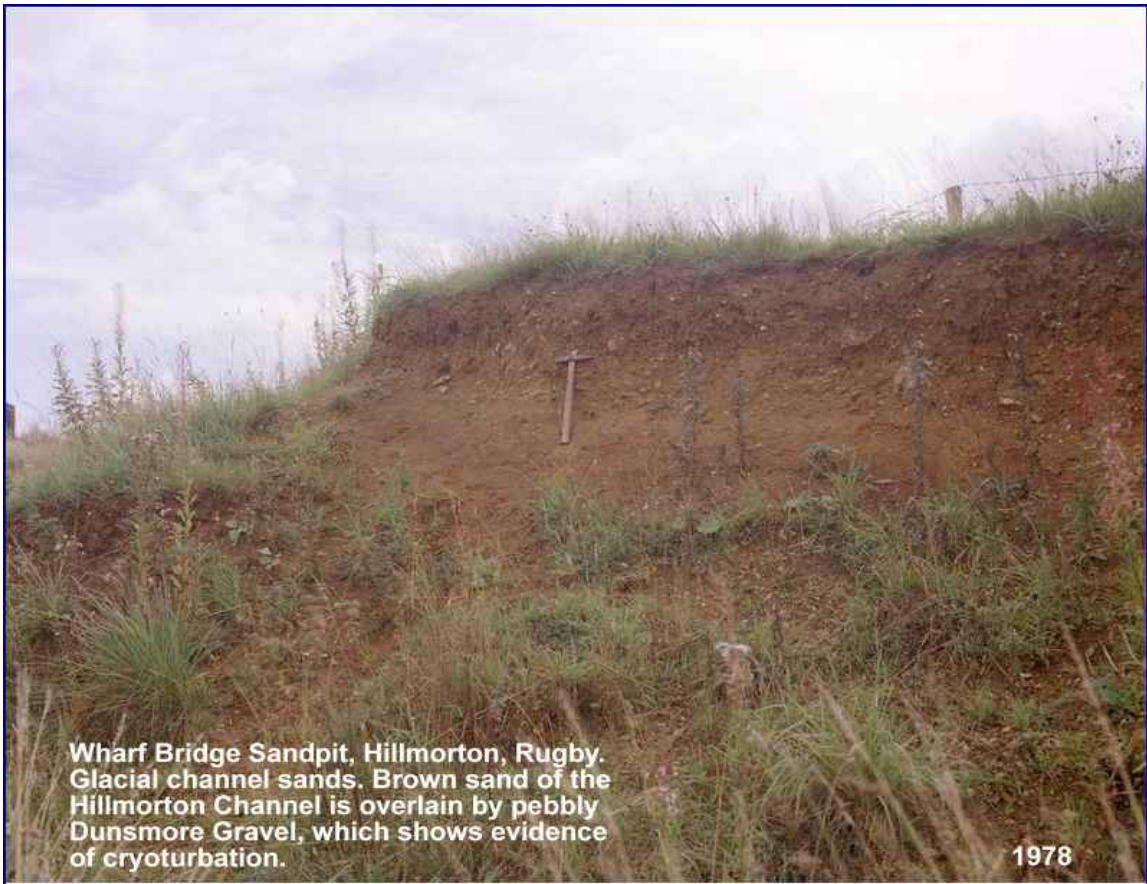
The LoGS Officer WGCG, c/o Keeper of Geology, Warwickshire Museum, Market Place, Warwick CV34 4SA (tel: 01926-418182)

**WARWICKSHIRE GEOLOGICAL CONSERVATION GROUP  
LOCAL GEOLOGICAL SITE (LoGS)**

<b>Site</b>	47	Royal Oak Gravel Pit & Cutting
<b>Parish</b>	Clifton upon Dunsmore	
<b>District</b>	Rugby	
<b>County</b>	Warwickshire	
<b>National Grid Reference</b>	SP 5468 7342	
<b>Ordnance Survey Sheets 1:50000</b>	140	
<b>1:10000</b>	SP 57 SW	

<b>Location</b>
A disused sand and gravel pit south of Crick Road, Hillmorton and adjacent to and including the nearby mainline railway cutting.

<b>Summary of Interest</b>
A partially land-filled site with exposures of the Hillmorton Member of the Middle Pleistocene Wolston Formation, comprising sands and gravels with fractured flints and smooth sandstone pebbles. Up to 6m of eroded faces with a total length exceeding 30m. However, these are (2009) badly slumped and heavily vegetated.



Wharf Bridge Sandpit, Hillmorton, Rugby.  
Glacial channel sands. Brown sand of the  
Hillmorton Channel is overlain by pebbly  
Dunsmore Gravel, which shows evidence  
of cryoturbation.

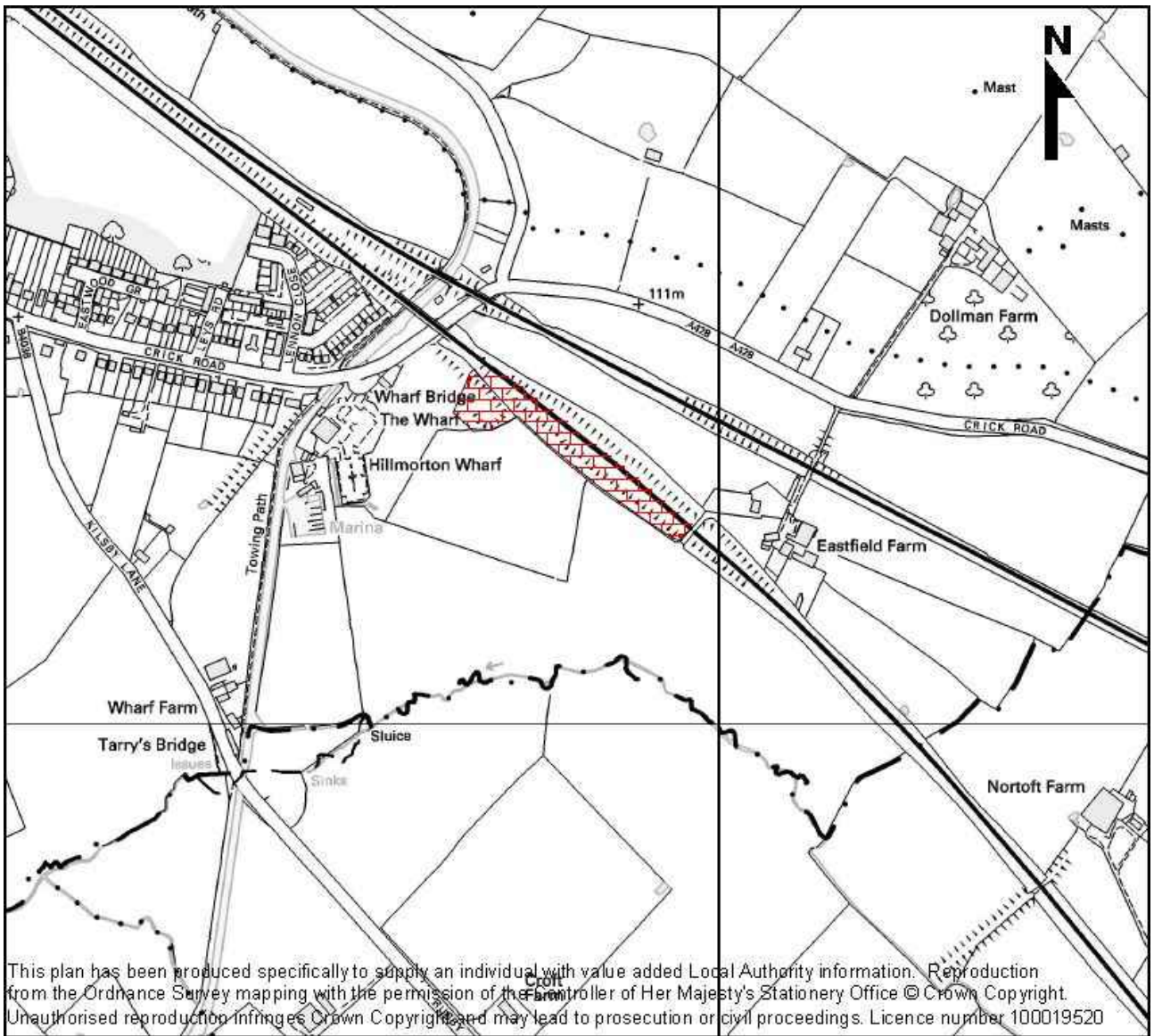
1978

British Geological Survey P212254



Warwickshire Geological Conservation Group 2009





This plan has been produced specifically to supply an individual with value added Local Authority information. Reproduction from the Ordnance Survey mapping with the permission of the Controller of Her Majesty's Stationery Office © Crown Copyright. Unauthorised reproduction infringes Crown Copyright and may lead to prosecution or civil proceedings. Licence number 100019520