

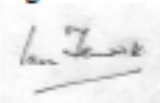
Warwickshire Geological Conservation Group

Warwickshire Local Geological Site	
Site No: 67	Stipers Hill Plantation
Geological Formations	Hopwas Breccia Formation (Permo-Triassic)
Criteria Form	p 2
Description	p 3 & 4
Photographs	p 4 & 5
Location Map	p 6

Local Geological Sites (LoGS), designated by locally developed criteria, are currently the most important places for geology and geomorphology outside statutorily protected land such as Sites of Special Scientific Interest (SSSI). The designation of LoGS is one way of recognising and protecting important Earth science and landscape features for future generations to enjoy.

WGCG is responsible for the identification of LoGS in Warwickshire and the West Midlands.

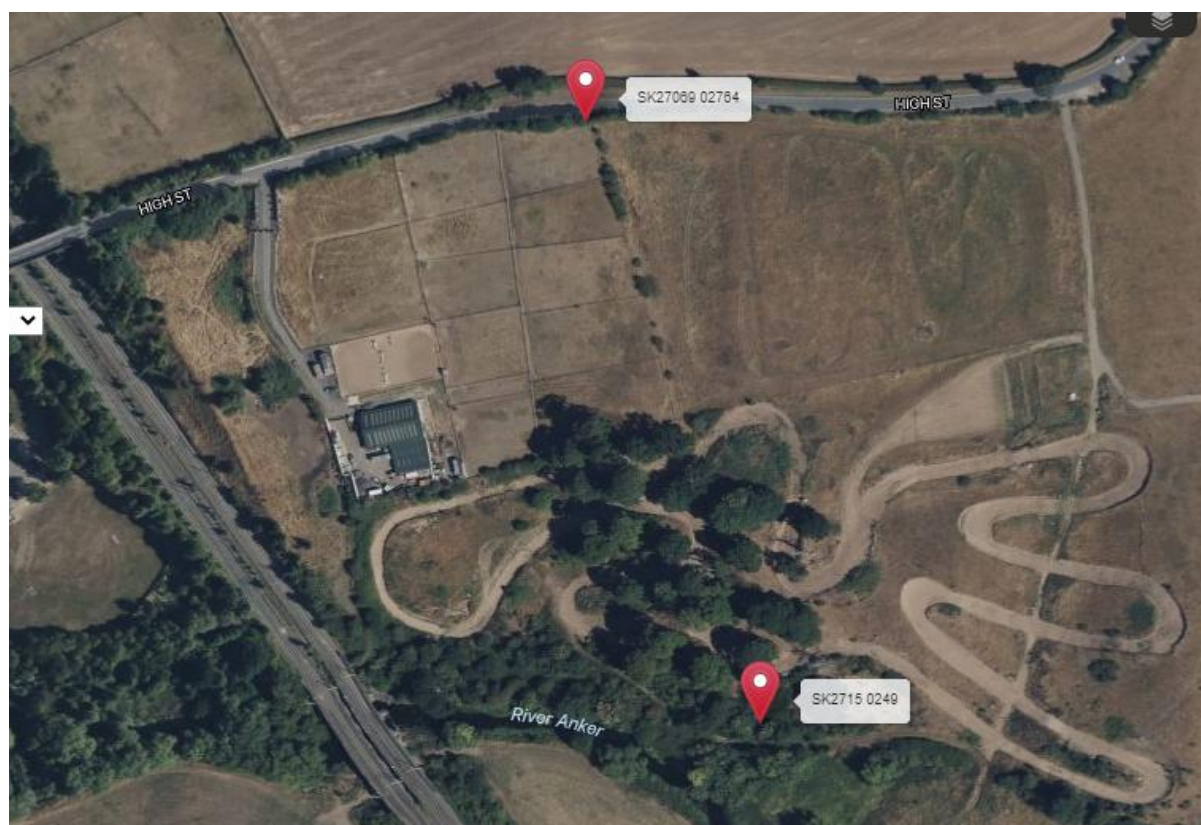
Please note that designation of a site as a LoGS does not confer a legal right of access. Unless the site is on a designated public right-of-way, the landowner's permission is required before visiting.

Warwickshire Local Geological Site - Criteria Form					
Site name: Stipers Hill Plantation		Also known as:			
District: North Warwickshire		County: Warwickshire			
Grid reference: SK2706 0275 (road) to 2715 0249 (plantation)		LoGS Number: 67		ESCC Class:	EO/ER
Brief Description: Exposures of basal Triassic Hopwas breccia					
This site qualifies as a Local Geological Site for the following criteria:					
A Good Example of Hopwas breccia					
Educational Fieldwork					
1. Educational Potential	✓	2. Physical access	✓	3. Safety	✓
Scientific Study					
1. Diversity of interest	✓	2. Rarity of interest	✓	3. Size of feature	
4. Typicalness of feature	✓	5. Geological/physiographic linkage to: <i>Roundberry Quarry (1)</i>			✓
Historical Value					
1. Celebrity link		2. Pioneering research		3. Historical link: <i>Horace Brown</i>	<input type="checkbox"/>
Aesthetic Value In The Landscape					
1. Local importance in the landscape		2. Promotion of Earth science			
Signed  I M Fenwick, Chairman, Warwickshire Geological Conservation Group			Date first selected 13th March 2002		
			Reviewed by LoGS panel Oct. 2009		
			Further survey required		
			LoGS Confirmed		
Endorsed by					
Warwickshire Museum			Natural England		
J Radley, Keeper of Geology			J A Irving, Conservation Adviser		
In the event of any development or planning consultation relating to this site or its surrounds please inform: The LoGS Officer WGCG, c/o Keeper of Geology, Warwickshire Museum, Market Place, Warwick CV34 4SA (tel: 01926-418182)					

Stipers Hill Road exposure Resurveyed 4th May 2023

WARWICKSHIRE GEOLOGICAL CONSERVATION GROUP LOCAL GEOLOGICAL SITE (LoGS)

Site	67	Stipers Hill Plantation
Parish		Polesworth
District		North Warwickshire
County		Warwickshire
National Grid Reference		Road Cut.: SK27069 02764 Plantation: SK27115 0249
Ordnance Survey Sheets 1:50000 1:10000		140 SK 20 SW



Location

The site extends from the south bank of Stipers Hill Plantation to the northern boundary of the Warton road / Stipers Hill. It encompasses the whole of the hill, the topographic ridge forming the field boundary and the road cutting. The site is approximately 1km east of Polesworth.

Summary of Interest

The site comprises a strip of high ground at Stipers Hill, between the River Anker and the Polesworth – Warton road (Stipers Hill). The site is bounded to the north, west and south by exposures of the basal Permo-Triassic Hopwas Breccia dipping steeply to the south-east in proximity to the Polesworth Fault on the eastern boundary of the Coventry Horst. The Hopwas Breccia comprises poorly sorted sandy conglomerates with angular clasts. The northernmost of these sections (the Stipers Hill road cutting) featured in Horace Brown's important (1889) paper on Hopwas Breccia petrology and is thus of some historical significance. The clasts comprise quartzite (84%), Carboniferous limestone (9%), igneous rocks (4%) and grey, slate (2.6%) according to BGS Memoir (Bridge et al., 1998) and so indicates some local provenance.



Stipers Hill Plantation exposure Grid ref SK2715 0249

The land between the breccia outcrops is occupied by intermittently exposed pebbly red sands. This is mapped by BGS as Triassic Chester Formation (formally Polesworth Formation) but glacial gravels are also locally developed which are derived from the Chester Formation. Further exposures of the breccia are found on the southern bluff of the plantation.

References

Bridge, D. McC., Carney, J.N., Lawley, R.S. and Rushton, A.W.A. 1998. Geology of the country around Coventry and Nuneaton. Mem. British Geol. Survey, Sheet 169 (England and Wales), HMSO.

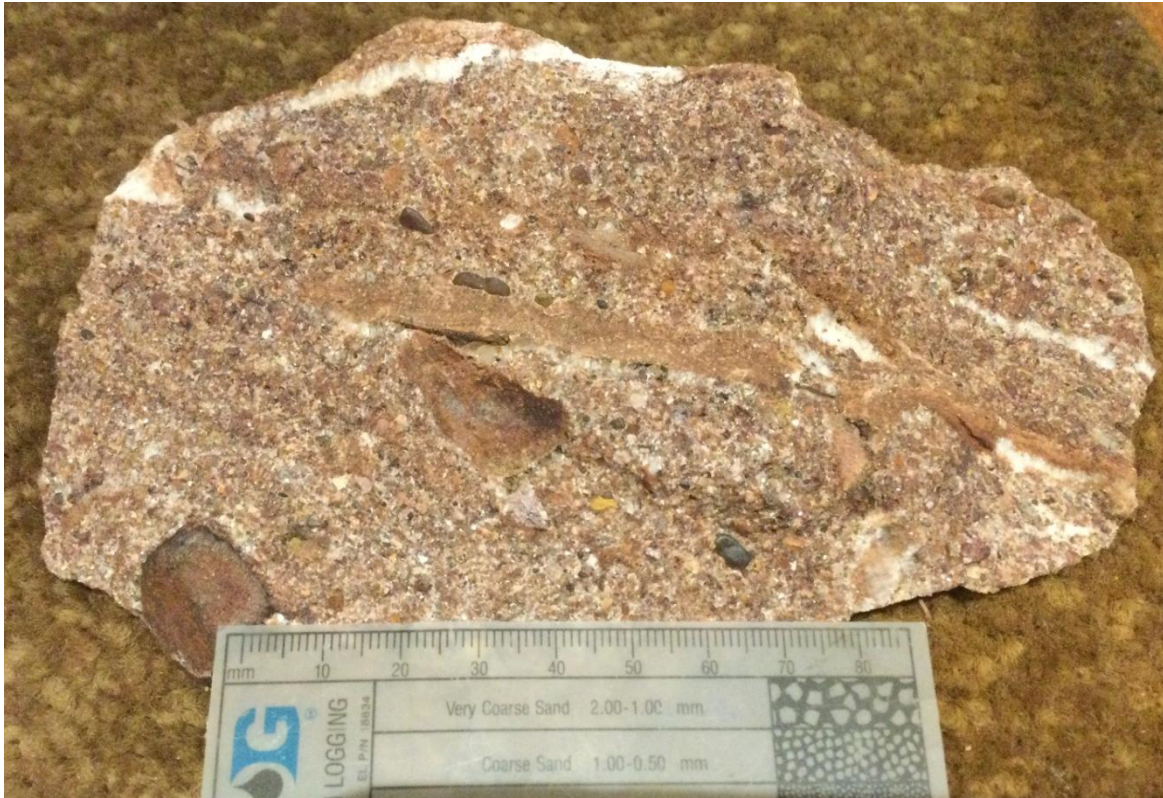
Brown, H.T. 1889. The Permian Rocks of Leicestershire. Qt. Jl. Geol. Soc. Lond., 45, 1-40.



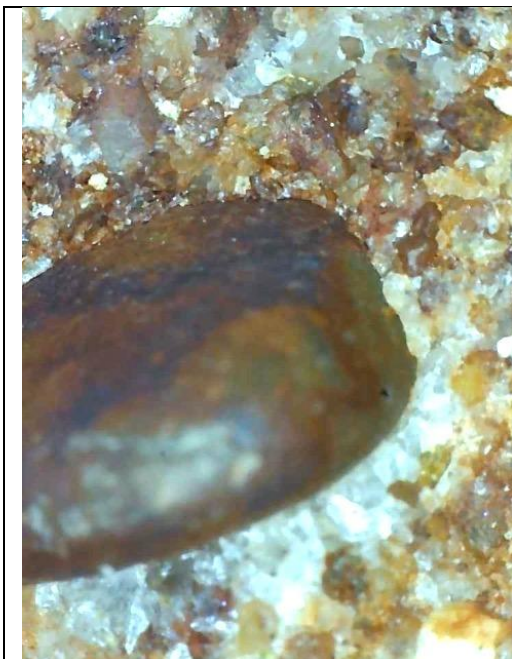
Footpath steps on north side of Stipers Hill road composed of Hopwas Breccia



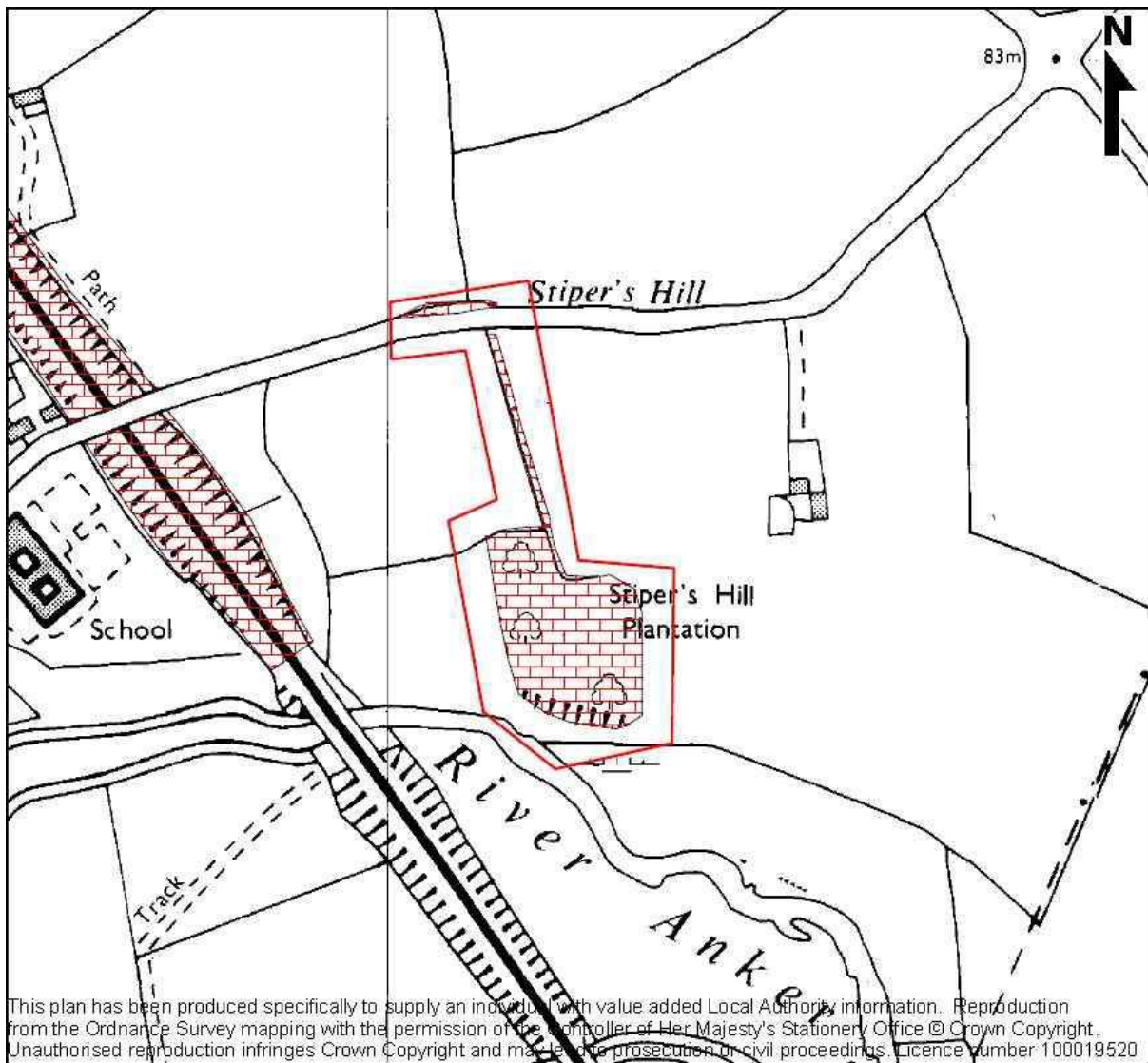
Hopwas breccia can be seen just in front of the steps by scraping away the thin soil and vegetation cover SK27069 02764



Hopwas Breccia. Red brown colour due to iron staining, very Hard, poorly sorted, subrounded pebbles, layering and foresets indicate water lain. Strong calcareous cement.



Magnification *30 showing quartz rich tight packed mix of poorly sorted grains with a calcite cement



This plan has been produced specifically to supply an individual with value added Local Authority information. Reproduction from the Ordnance Survey mapping with the permission of the Controller of Her Majesty's Stationery Office © Crown Copyright. Unauthorised reproduction infringes Crown Copyright and may lead to prosecution or civil proceedings. Licence number 100019520